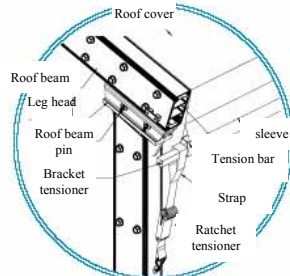
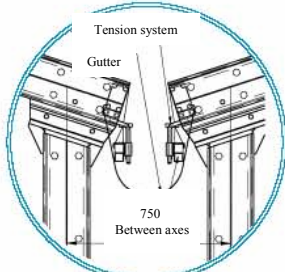
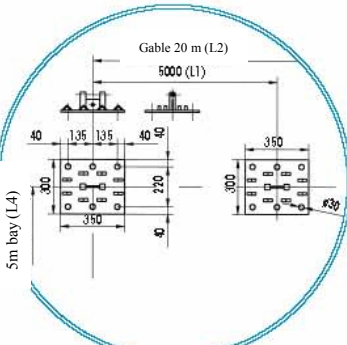
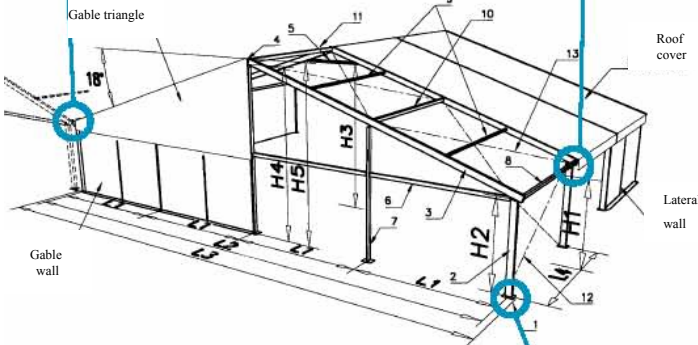


MULTISTANDARD SPAN 20 m, ht 2.50 m, 3 m and 4 m

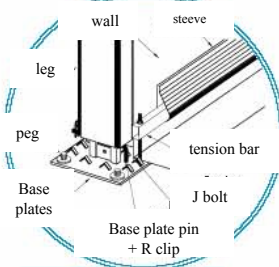


Roof tension

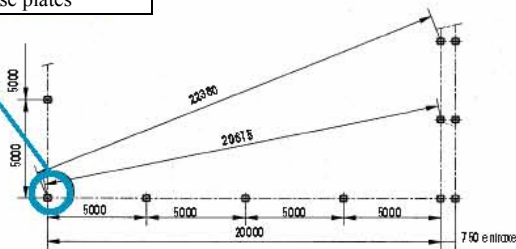
Juxtaposed structures



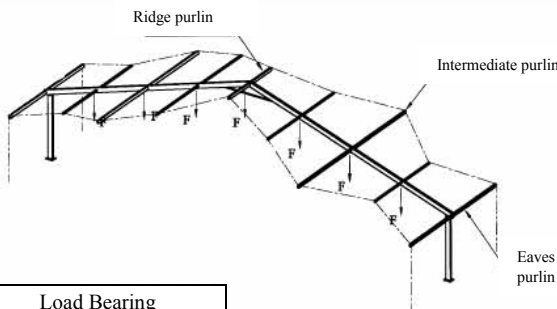
Base plates



Wall tension



Setting out



Load Bearing

Specifications	20 m			
	ht 2,5 m	ht 3 m	ht 4 m	
Span	L2	20	20	20
Overall Width	L3	20,58	20,58	20,58
External lateral height		2,62	3,17	4,17
Internal lateral height	H2	2,53	3,08	4,08
External ridge height	H5	5,93	6,48	7,48
Internal ridge height	H3	5,73	6,28	7,28
Height at gable cross beam		2,47	3,02	4,02
Under eaves height	H1	2,48	3,03	4,03
Height at roof brace	H3	5,45	6	7
Lateral bay	L4	5	5	5
Gable bay	L1	5	5	5
Roof Pitch		18°	18°	18°
Base Plate	1	350x300	350x300	350x300
Leg	2	210x110 reinforced	210x110 reinforced	210x110 reinforced
Roof Beam	3	210x110 reinforced	210x110 reinforced	210x110 reinforced
Apex joint	4			
Roof brace	5	Ø48,3 mm	Ø48,3 mm	Ø48,3 mm
Gable cross beam	6	125x75	125x75	125x75
Gable column	7	125x75	125x75	125x75
Eaves purlin	8	125x75	125x75	125x75
Intermediate purlin	9 and 10	60 x60 and 125x75	60 x60 and 125x75	60 x60 and 125x75
Ridge purlin	11	125x75	125x75	125x75
Number of purlins per bay		9	9	9
Lateral bracing cable	12	Ø 8 mm	Ø 8 mm	Ø 8 mm
Roof bracing cable	13	Ø 8 mm	Ø 8 mm	Ø 8 mm

Erection/dismantling	Example 20x25x3m	Example 20x50x3m
Number of people	6	6
Total duration of erection	7 hours	10 hours
vehicles + duration	12 m fork lift truck (7h)	12 m fork lift truck (1 day)
Necessary equipment provided with frame	11toasting fork 220 m, 4m and 5m and 6m ; 1measuring bar 10 m + 2 no. Toasting ropes 6m ; 3 ropes 30 m Ø 14 mm ; 2 handles for ratchet tensioner	
Necessary equipment not provided	2 no. 4m ladders, 1 no. 20 m measuring tape, sledgehammers, hammers, adjustable spanners	
Time saved for dismantling	15 to 20 %	

* exemples details and explanations page 112

Anchoring and weighting	Anchoring			Weighting	
	Uplift force kg	Coef.	Number of pegs	Uplift force kg	Coef.
Exterior braced base plate	3540	2	5 lg 850	2900	1,65
Common + intermediate braced base plate	2640	2	4 lg 850	2180	1,65
Gable base plate	600	2	2 lg 850	500	1,65

* exemples details and explanations page 112

Load Bearing	Height 2,50 m, 3 m and 4m
With snow	F = 0 kg
Without snow	F = 125 kg

* exemples details and explanations page 112

Packaging	Frame 20m	Covers 20m	Example* 20x20x3
Weight w ithout packaging ht 3 MB (kg)	1786	340	4292
Weight w ithout packaging ht 3 MS (kg)	606	116	
Weight w ithout packaging ht 4 MB (kg)	1976	380	
Weight w ithout packaging ht 4 MS (kg)	707	124	
CV/bay	40		
Number of cover racks			1
Number of frame racks			4
Number of boxes/crates			1
Theoretical surface required for transport by lorry on rack			12x1,2 m
Theoretical surface required for transport by lorry in bundles			9x2,4 m
Theoretical number of structures per container (in bundles) 20' dry			
Theoretical number of structures per container (in bundles) 40' open-top			4
Longest piece : roof beam 8035 mm			
Description of packaging, Covers in bags, on pallet or on rack			
Frame in bundles, loose or rack			

* Calculated on basis of complete structures, not mixed